

15W

WIRELESS CHARGING

Car Mount

/// ///

MW21 MW21-1



///
DOUBLE ARMS
AUTO-EXPAND/CLOSE



///
15W
WIRELESS FAST CHARGE

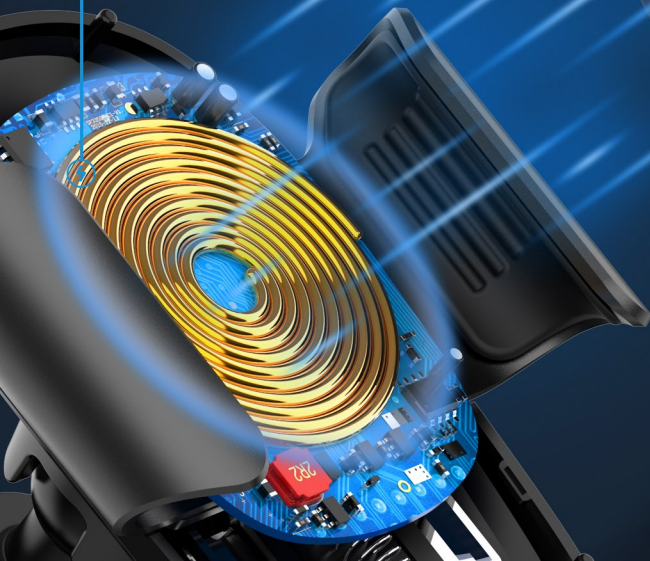


///
INDUCTION COIL
INDUCTION COIL

Qi wireless charging standard

Driving navigation &
charging 2 in 1

Upgrade pure copper coil



**USB-C PD +
QC3.0
charge in**

100cm USB-A
to USB-C
cable inside

INPUT: 5V=2.1A 9V=2.2A 12V=1.5A
OUTPUT: 3.3V=1A Max

CE
Made in China



Gravity sensor

Automatic tightening



Non-slip clamp

Non-slip clamp / Adhesive-pad for option

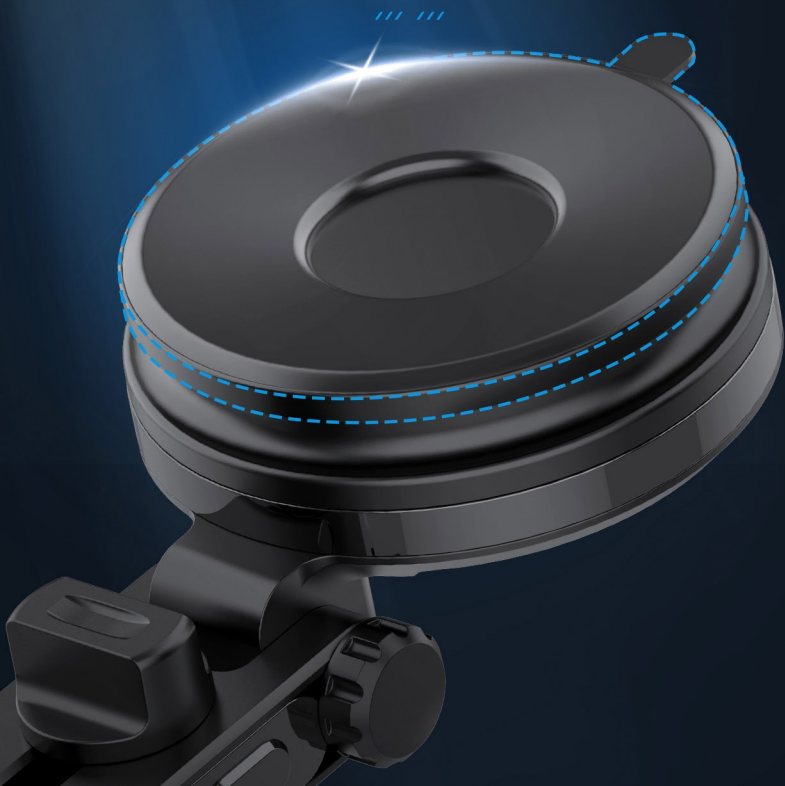


Adhesive-pad



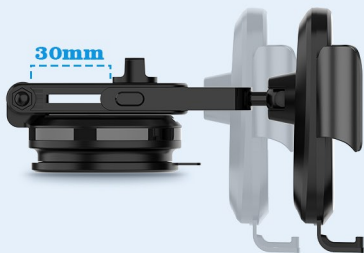
Nano vacuum adsorption

High temperature resistance,
durable and stable



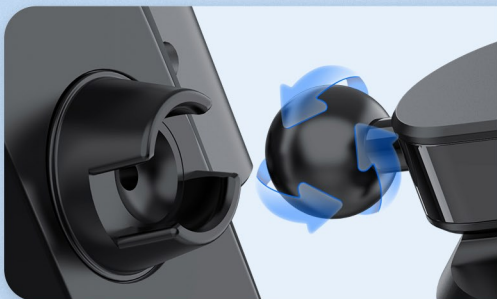


Front and rear
180° reversing
adjustment



30mm

Retractable arm,
additional
extension of 30mm



360° rotary ball



Non-slip clamp

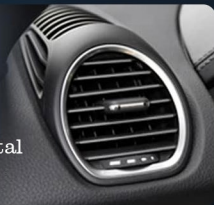
Apply to horizontal and
vertical air outlets



Vertical
Air Vent



Horizontal
Air Vent



Safe & convenient

Clamp and grip automatically





Built-in smart chip

Intelligently match
charging current



* Turbo power engine

Intelligently identifies your device to deliver the fastest possible
charge

Triangle power contraction

Lock and protect your phone well

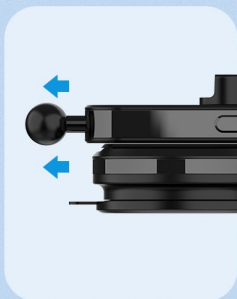




Adapt to all phones

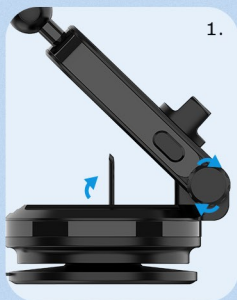


Easy installation



Bracket installation step :

The universal ball can be snapped in the slot behind the bracket



Suction cup installation steps :

1. Loosen the fixing nut, open the arm and pressurization valve
2. Tear off the glue film and stick it to a clean place
3. Press down the air release valve, adjust the angle and tighten the set screw

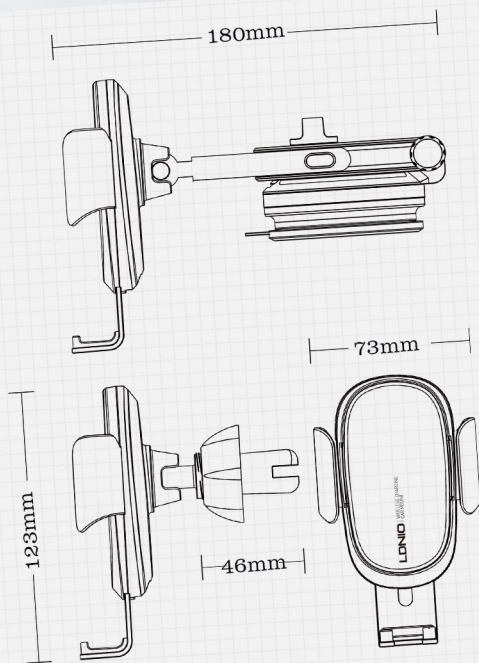
Parameter

Input: 5V/3A, 9V/2A, 12V/1.5A 18W

Output: 5W 7.5W 10W 15W Max

Suitable for: Mobile phone

Colour: Black



Package

MW21



